



SPECIFICATIONS

- 1 **Housing (light-box):**
CNC formed code gauge cold rolled steel
5-stage pretreatment
Powder coated gloss white
750 HR salt spray test
Built in safety hanger wire attachment points
Designed for easy access to service electrical components/lamps
- 2 **Luminous SkyTile (lens):**
Lightweight and durable
Hi-res digital reproduction from proprietary large format film library
Color-calibrated for 6500 Kelvin light source
Non-glare matte finish
Fade resistant pigmented inks containing UV inhibitors
Designed to fit Luminous SkyTile Elevator and includes hold down clips.
- 3 **Luminous SkyTile Elevator (frame):**
Light weight for quick and easy installation
Moisture resistant
Powder coated, white matte finish to match standard grid
Compatible with standard 2'x2' and 2'x4' 15/16" grid systems
Precision machined corners, seamless architectural appearance
Seismic safety system – 1/32" galvanized steel "aircraft" cable with 1" snap hooks fasten frame to light-box

Wiring & Electrical:

All fixtures rated for UVI (universal input voltage) 120-277VAC, 50/60Hz
Code gauge TFN wire used throughout, rated for required temperatures
7/8" knockout for easy electrical connection

Ballasts:

Class P
<10% THD (>0.99 PF)
Sound Rated A

Non-Dimmable

.55A @ 120V (66 Watts)
.23A @ 277V (63.7 Watts)

0-10v Dimmable

Dimmable from 1-100% through supplied low voltage 0-10V dimmer switch
.56A @ 120V (67.2 Watts)
.25A @ 277V (69.3 Watts)

DALI Dimmable

Dimmable from 1-100% through supplied momentary contact switch or DALI control system
Compatible with Programmable Luminous SkyCeiling
.55A @ 120V (66 Watts)
.23A @ 277V (63.7 Watts)

Lamps:

T5 fluorescent
Best environmental choice, most energy efficient in fluorescents
Lowest CO2 emissions (40% less than a TL-D lamp, 26% less than TLD 800)
Lowest mercury content in the industry, 100% lead free
Product dimension only 16mm diameter, 40% less compared to TLD lamps

Installation:

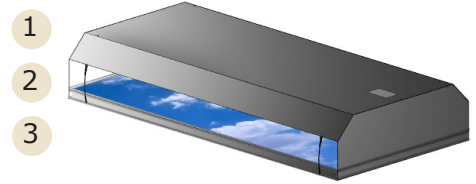
Easily installed into standard 2'x2' and 2'x4' 15/16" grid systems

Factory Installed Options:

Corrosion resistance
Alternate ballast

Listings: UL and CUL

LSC 24 T5 Seismic

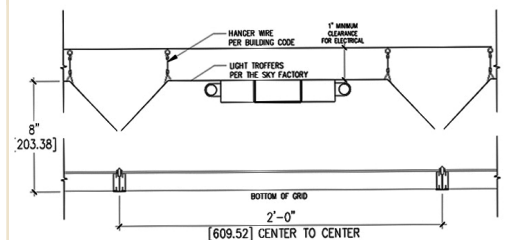


Client-provided ceiling grid system

Key Attributes:

15/16" ceiling grid mount
High efficiency lamps, 28 watts,
Up to 104 lm/W
6500 Kelvin – cool daylight
High CRI – 85

DIMENSIONAL DATA



CONFIGURATIONS



Custom configurations also available